

Figure 2.4 Plan of Quarry - Current Operation Footprint



Figure 2.5: Plan of Quarry - Proposed Stage 1

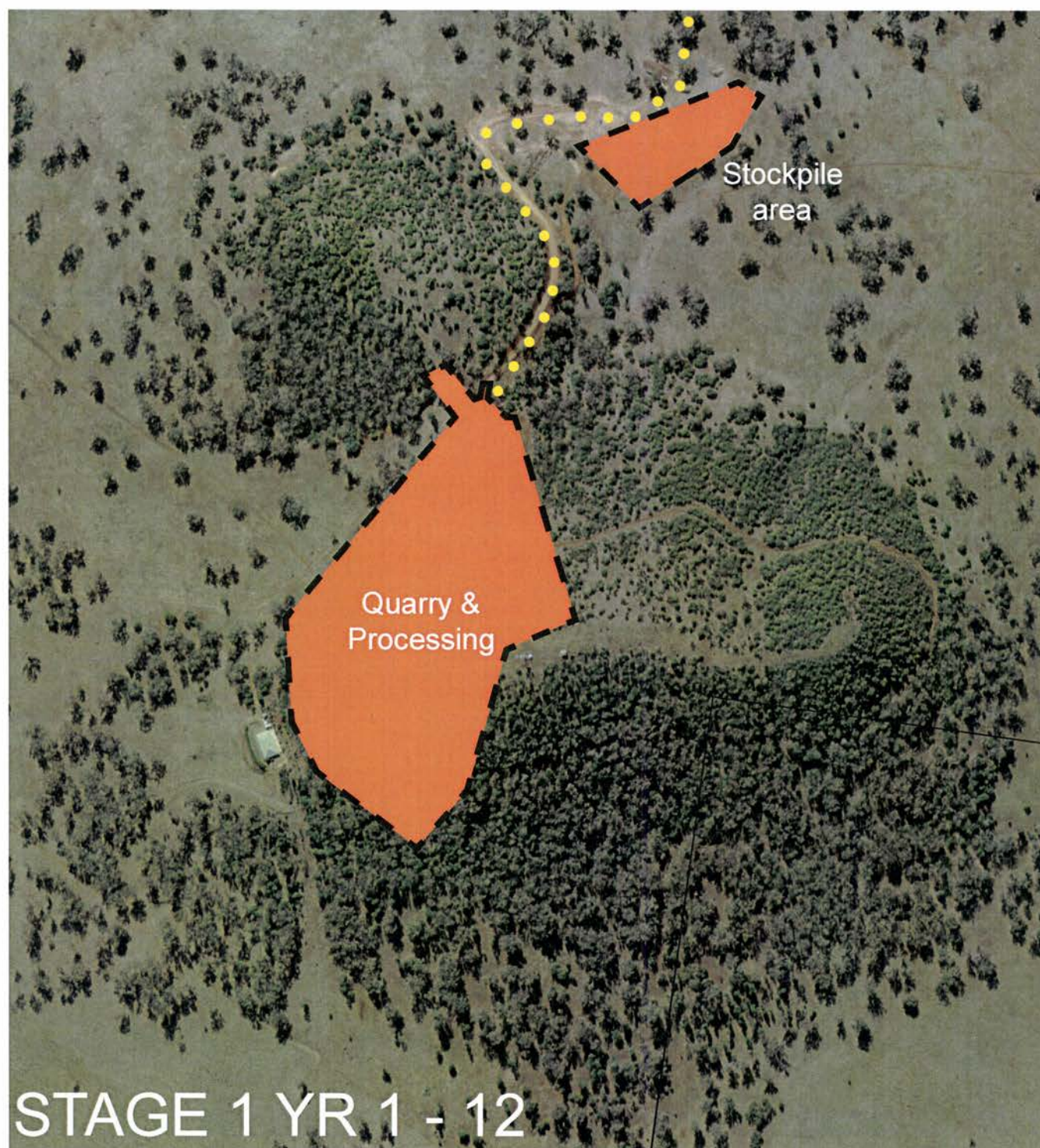


Figure 2.6 Plan of Quarry - Proposed Stage 2

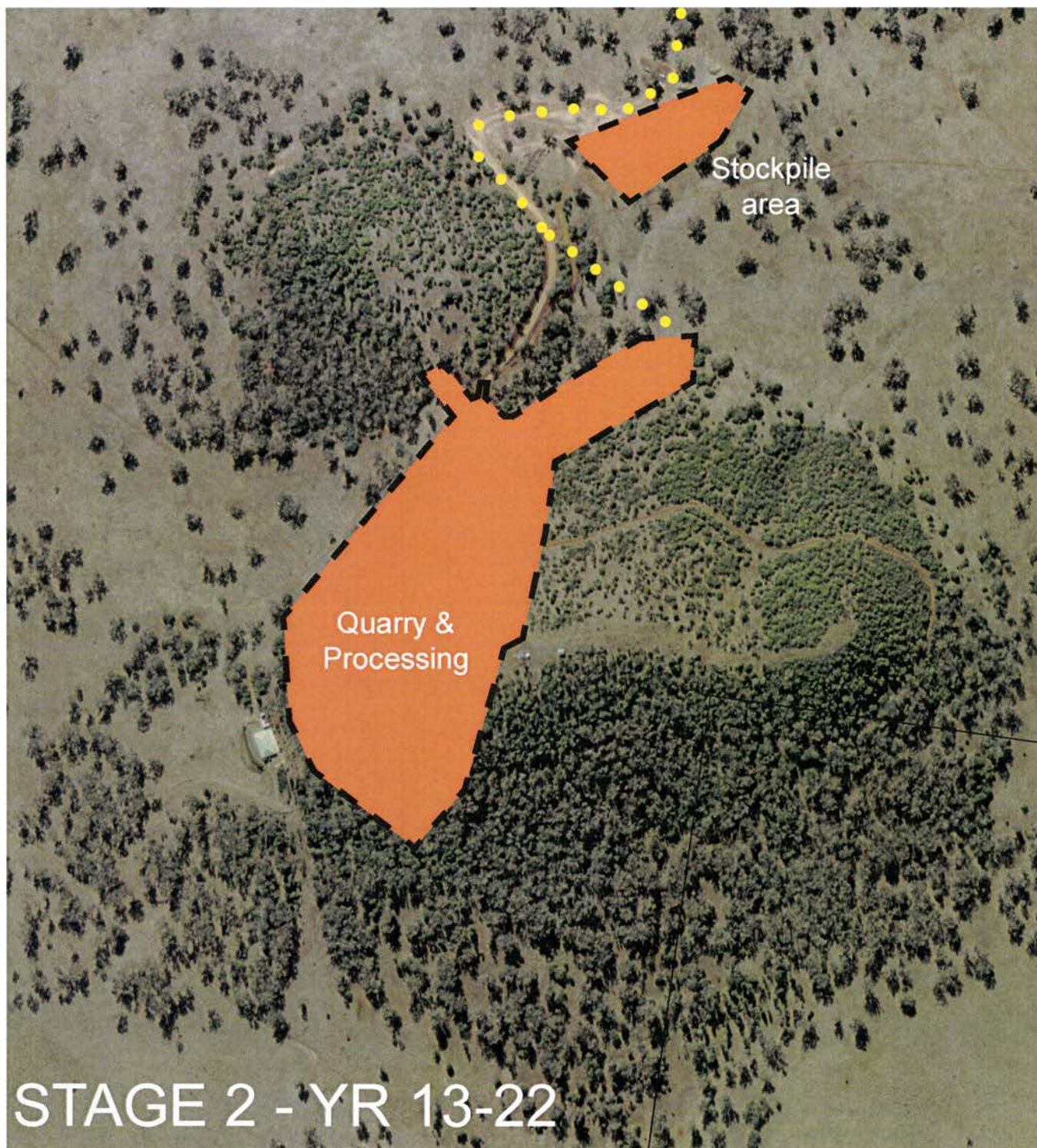


Figure 2.7: Plan of Quarry - Proposed Stage 3

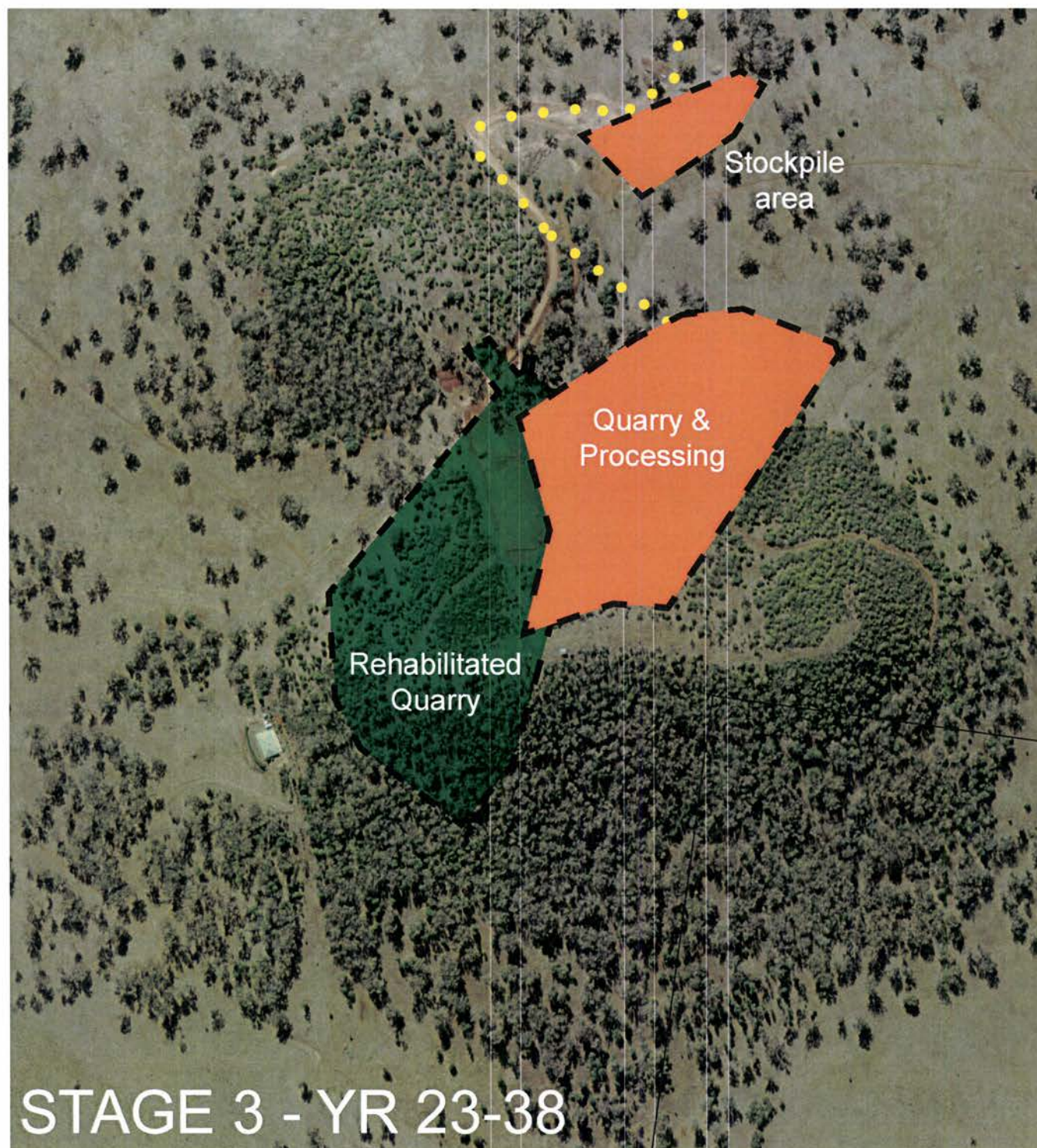


Figure 2.8 Plan of Quarry - Proposed Stage 1.1

The following plans show a more detailed overview of stage 1 operational stages.

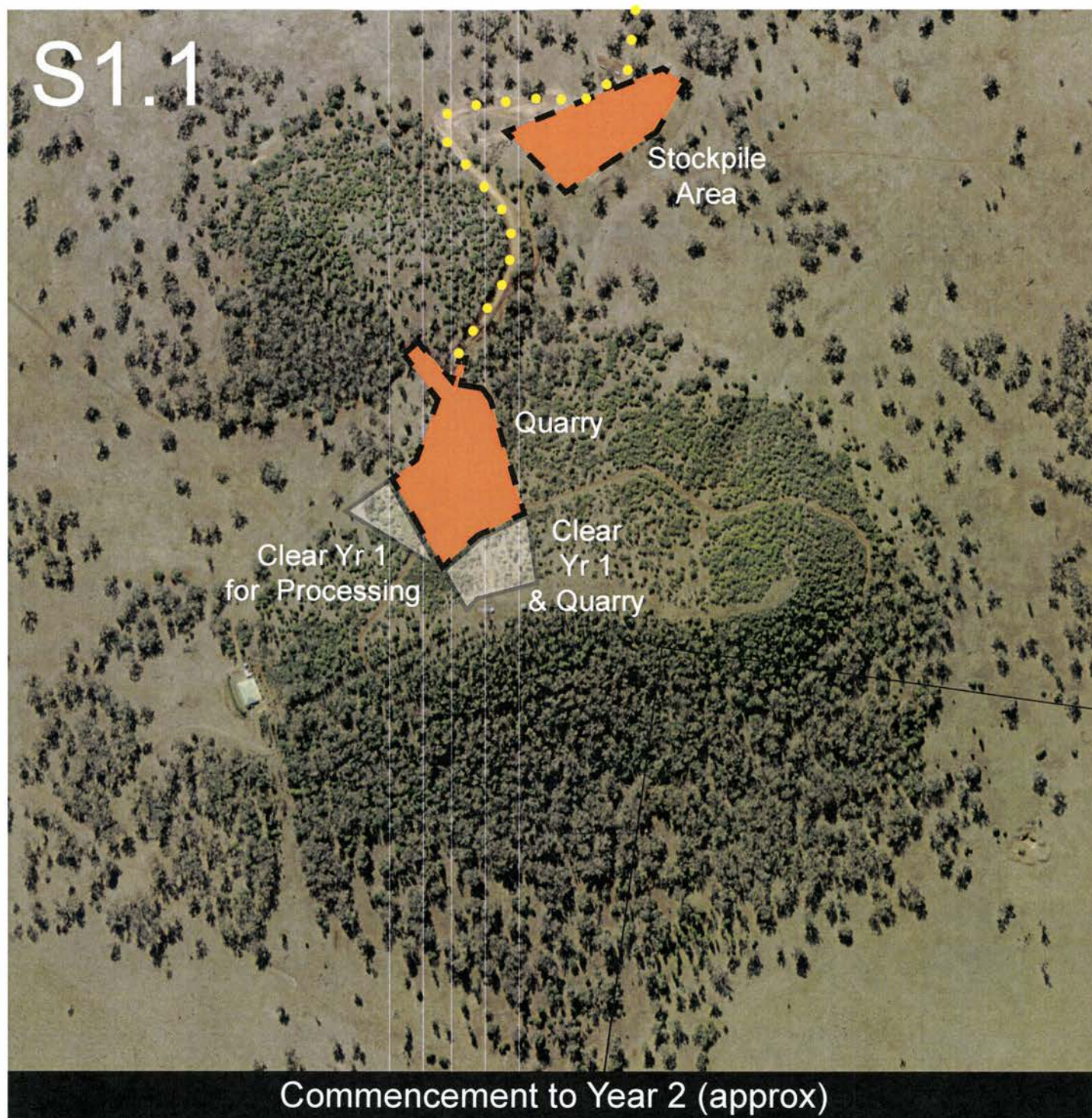


Figure 2.9: Plan of Quarry - Proposed Stage 1.2

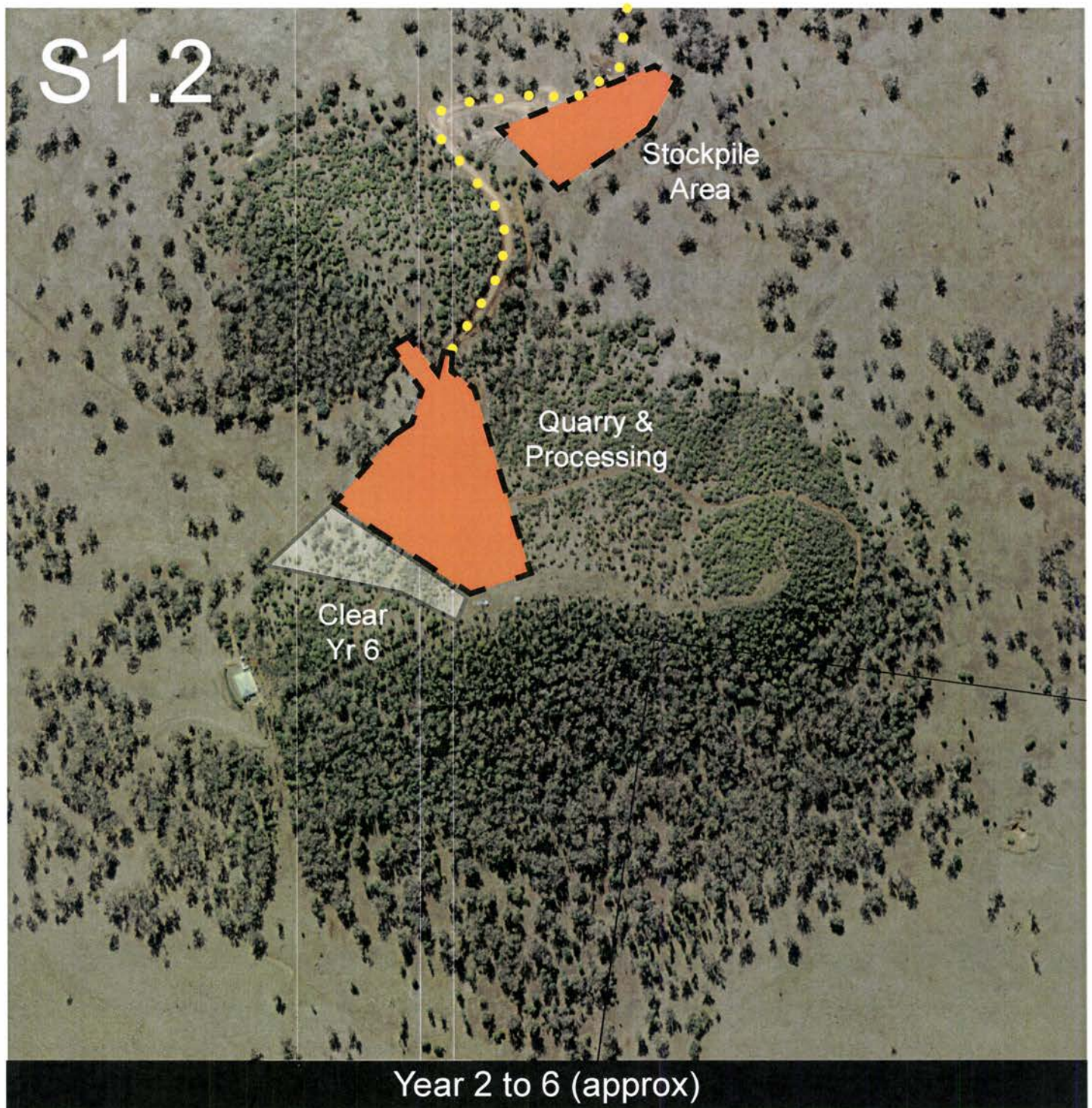


Figure 2.10: Plan of Quarry - Proposed Stage 1.3

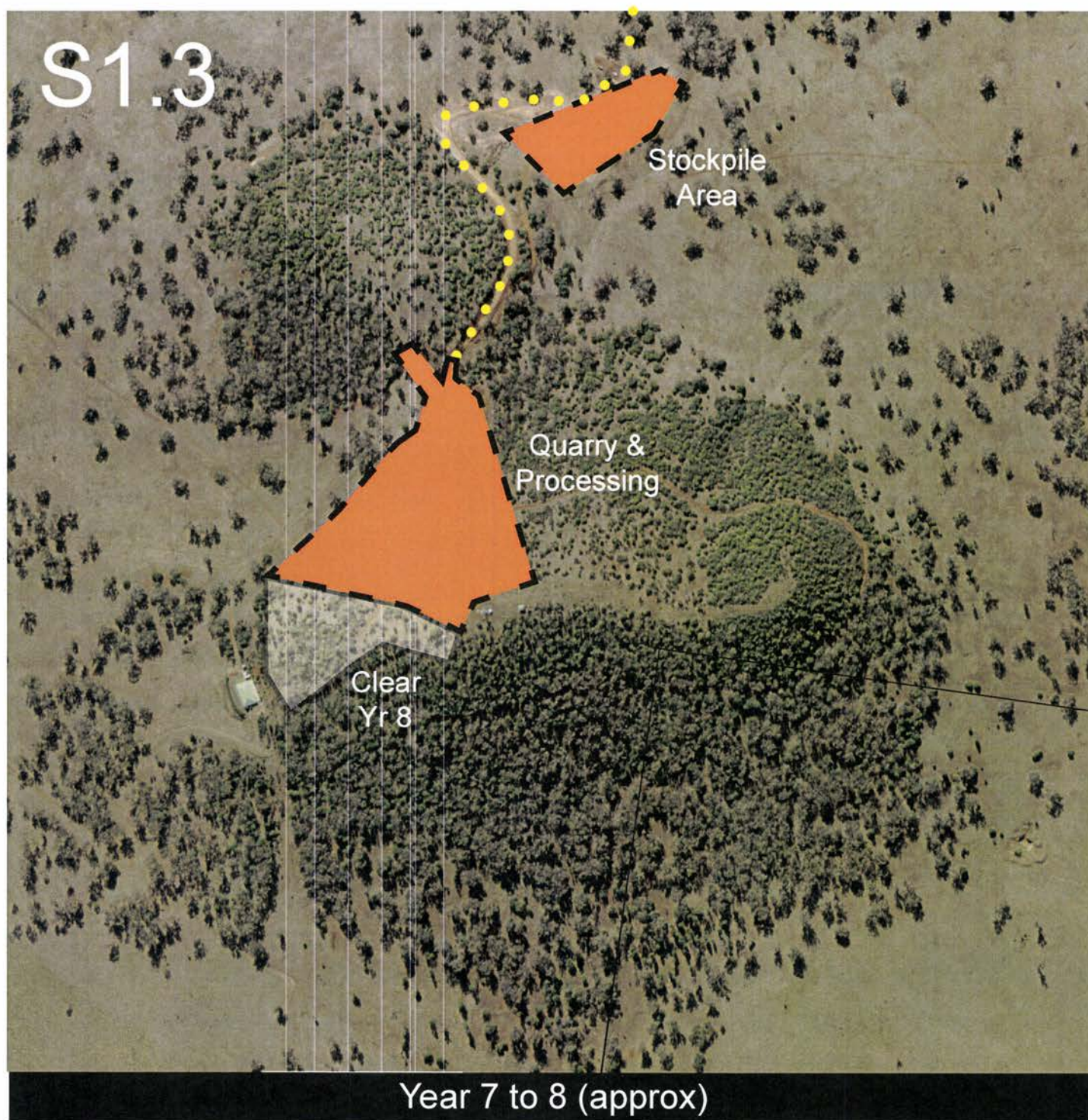


Figure 2.11: Plan of Quarry - Proposed Stage 1.4

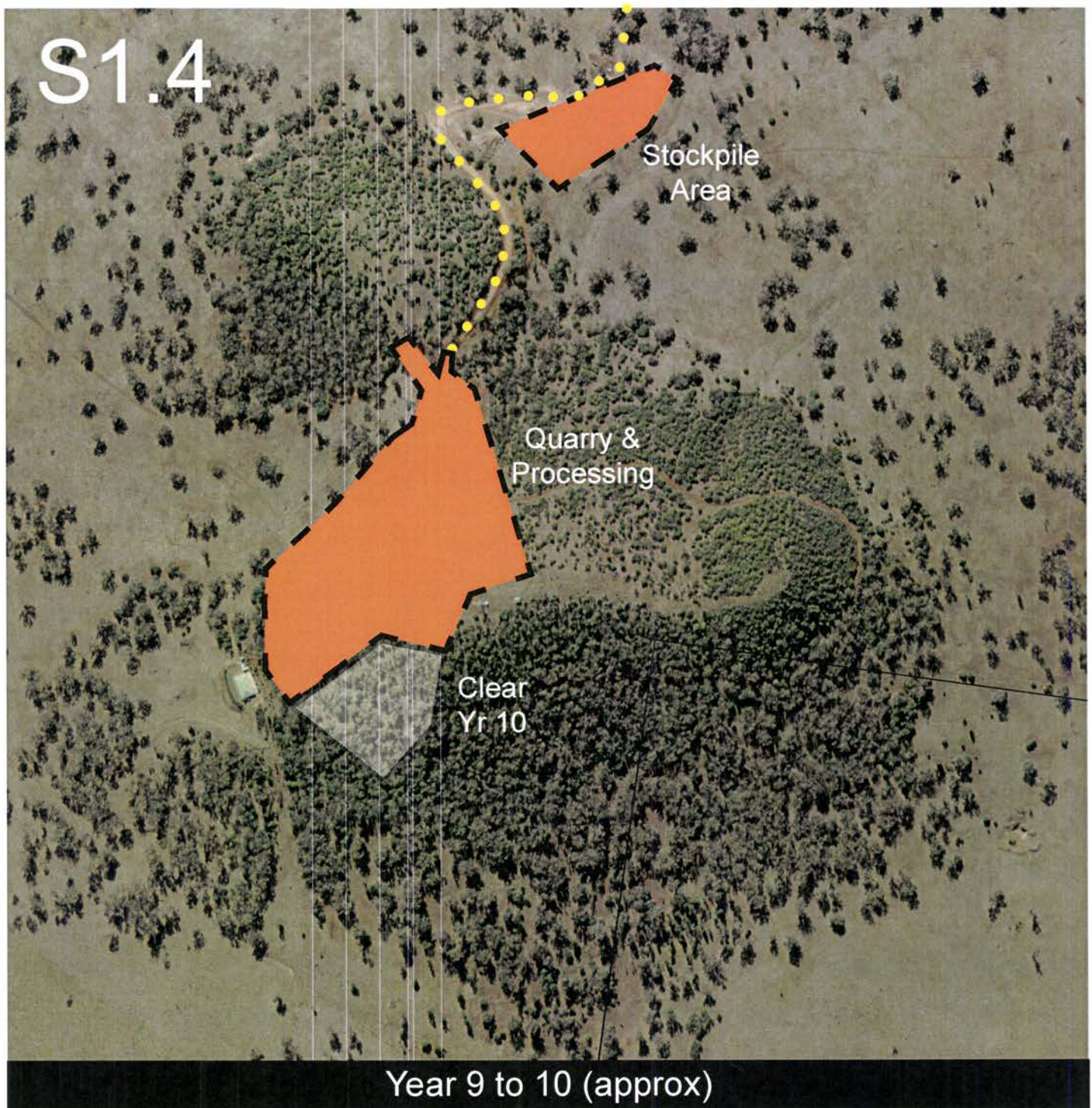


Figure 2.12: Plan of Quarry - Proposed Stage 1.5 & 2.1

The footprint for works in both stages 1.5 and 2.1 remains the same. In stage 1.5 the pit is excavated to its south wester extremity to a pit floor level of 440.00 metres AHD. Stage 2.1 is then over the same footprint excavating deeper to the final pit floor level of 409.75. This is illustrated in the typical cross section figure 2.3. Benching is constructed progressively as the quarry shape is formed.

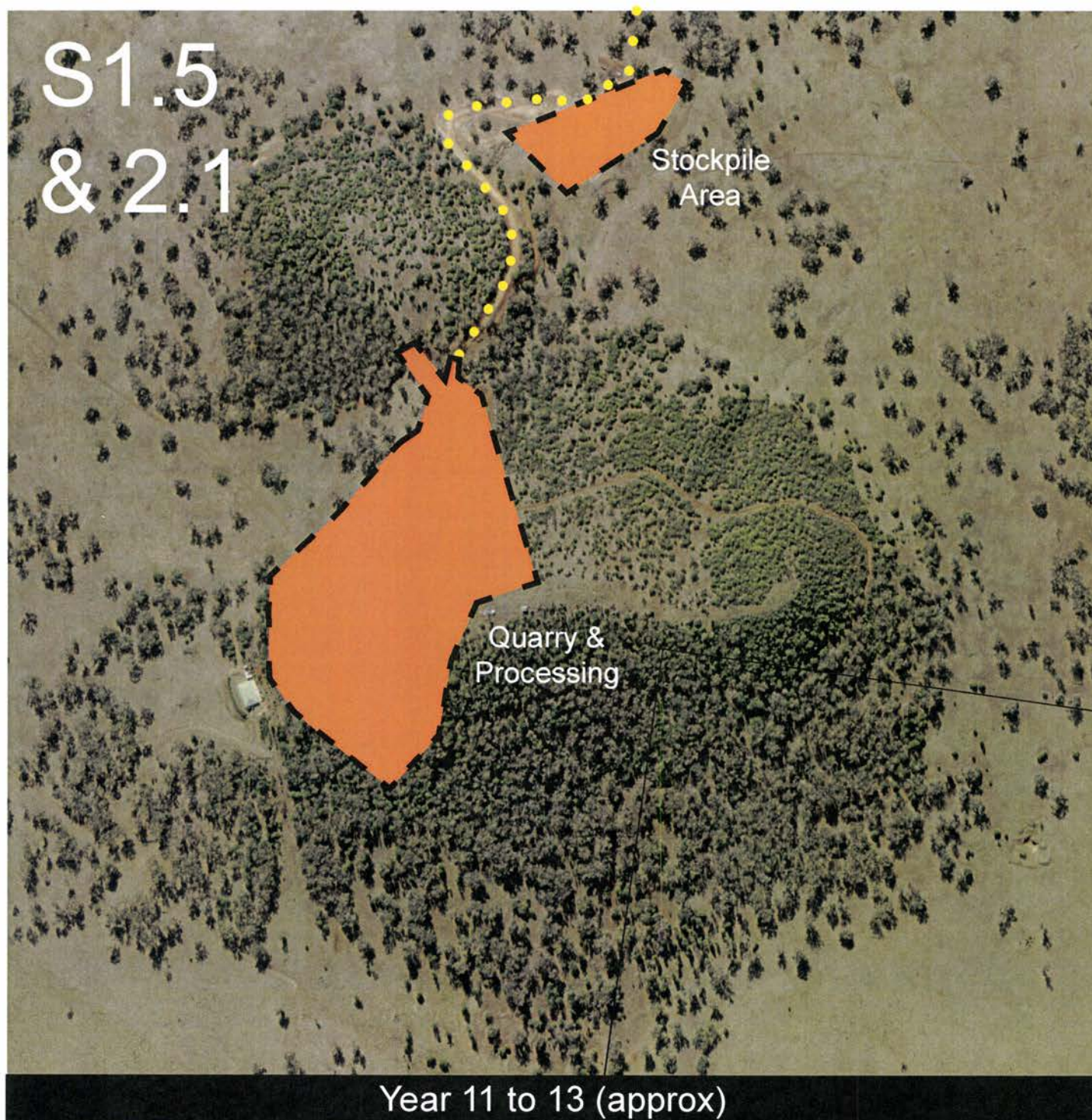


Figure 2.13: Plan of Quarry - Proposed Stage 2.2

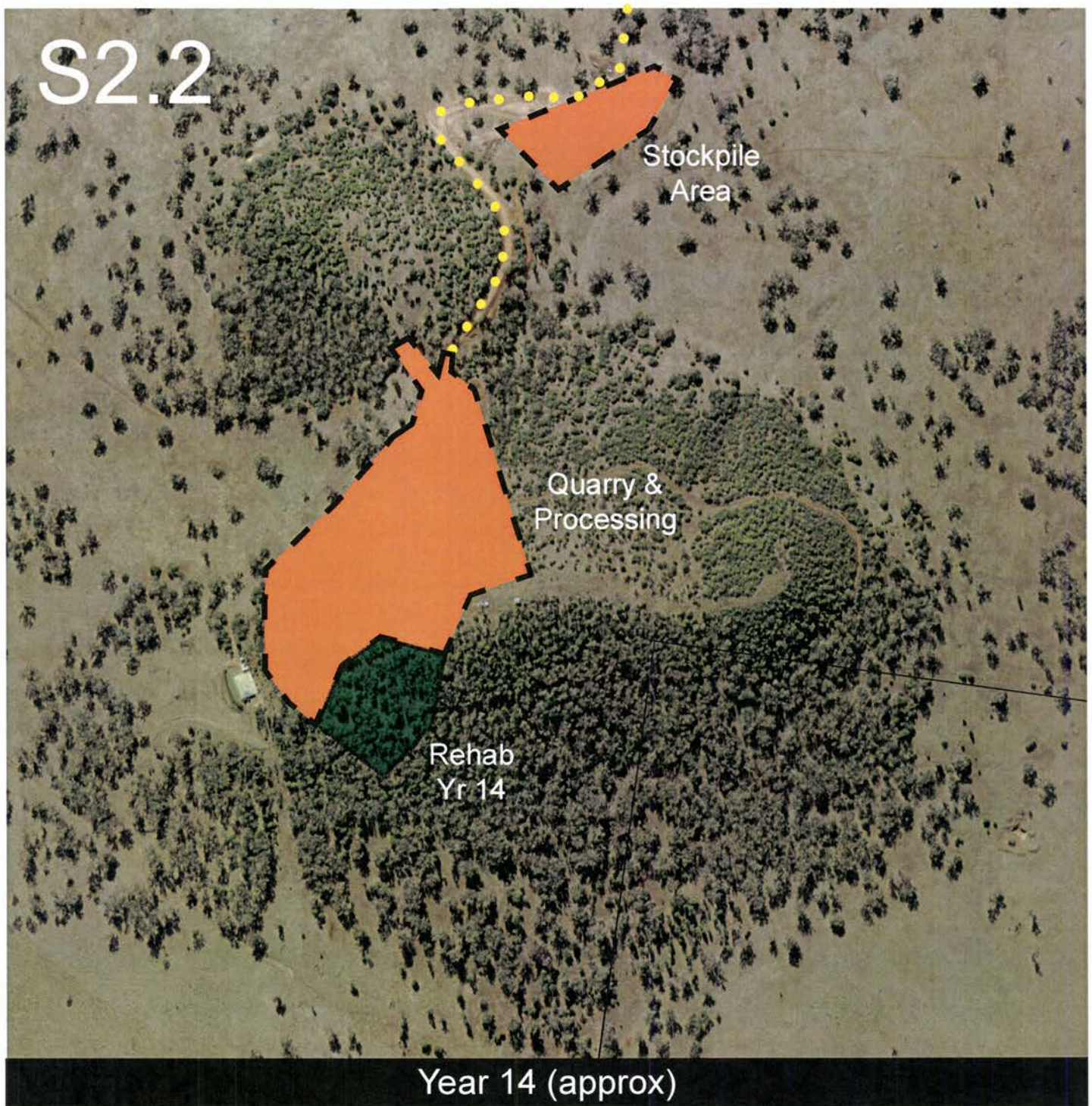


Figure 2.14: Plan of Quarry - Proposed Stage 2.3

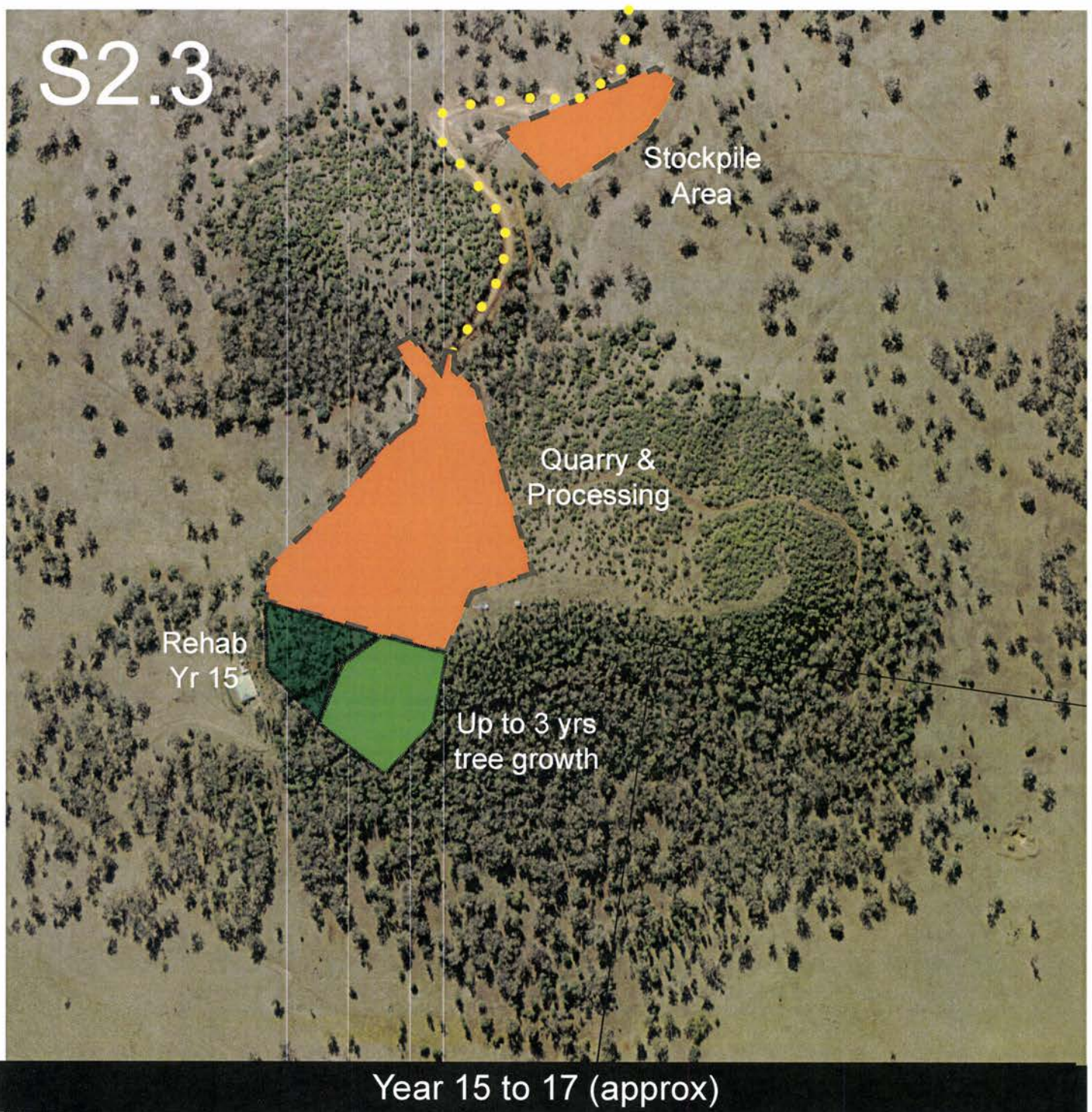


Figure 2.15: Plan of Quarry - Proposed Stage 2.4

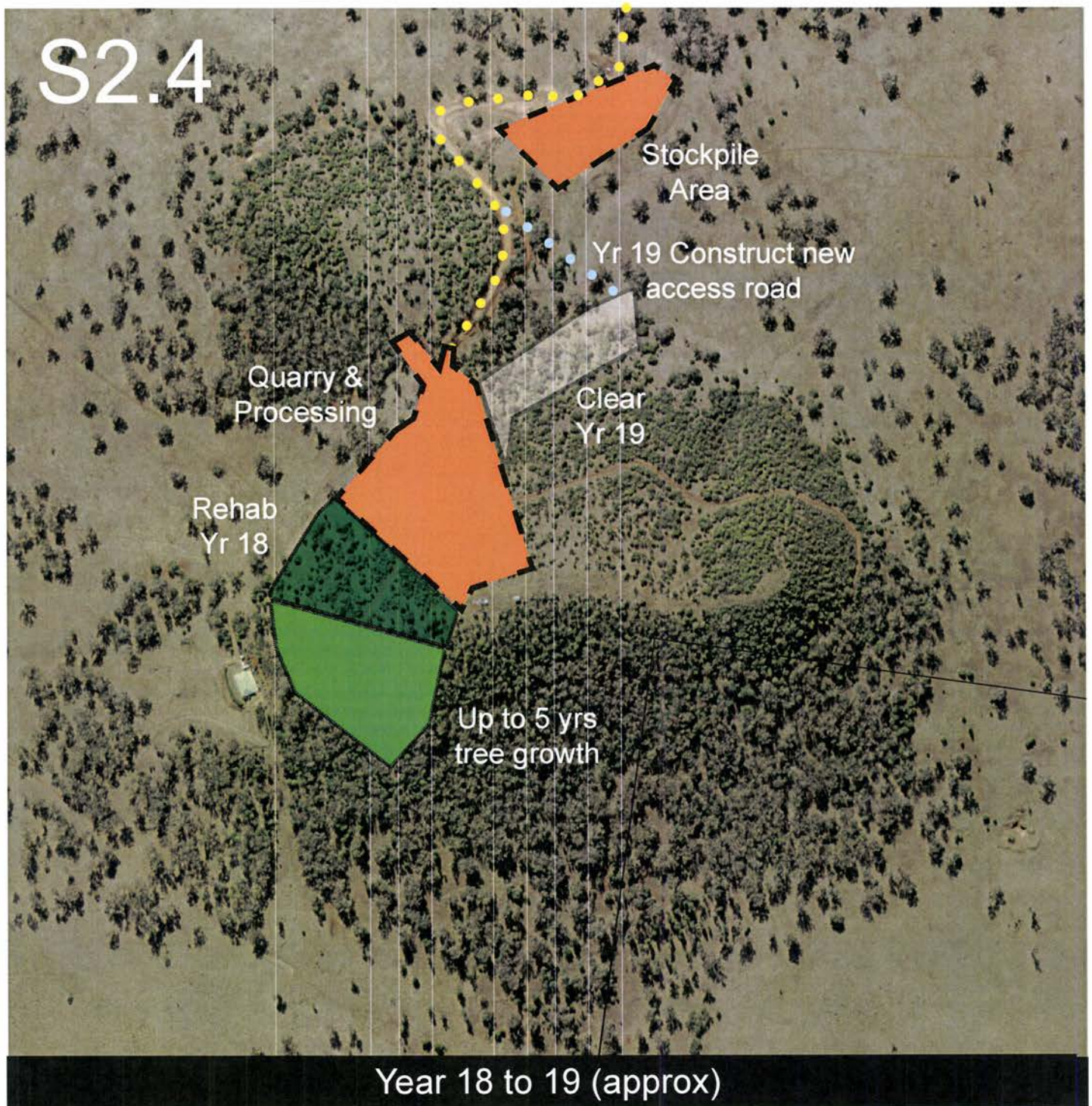


Figure 2.16: Plan of Quarry - Proposed Stage 2.5

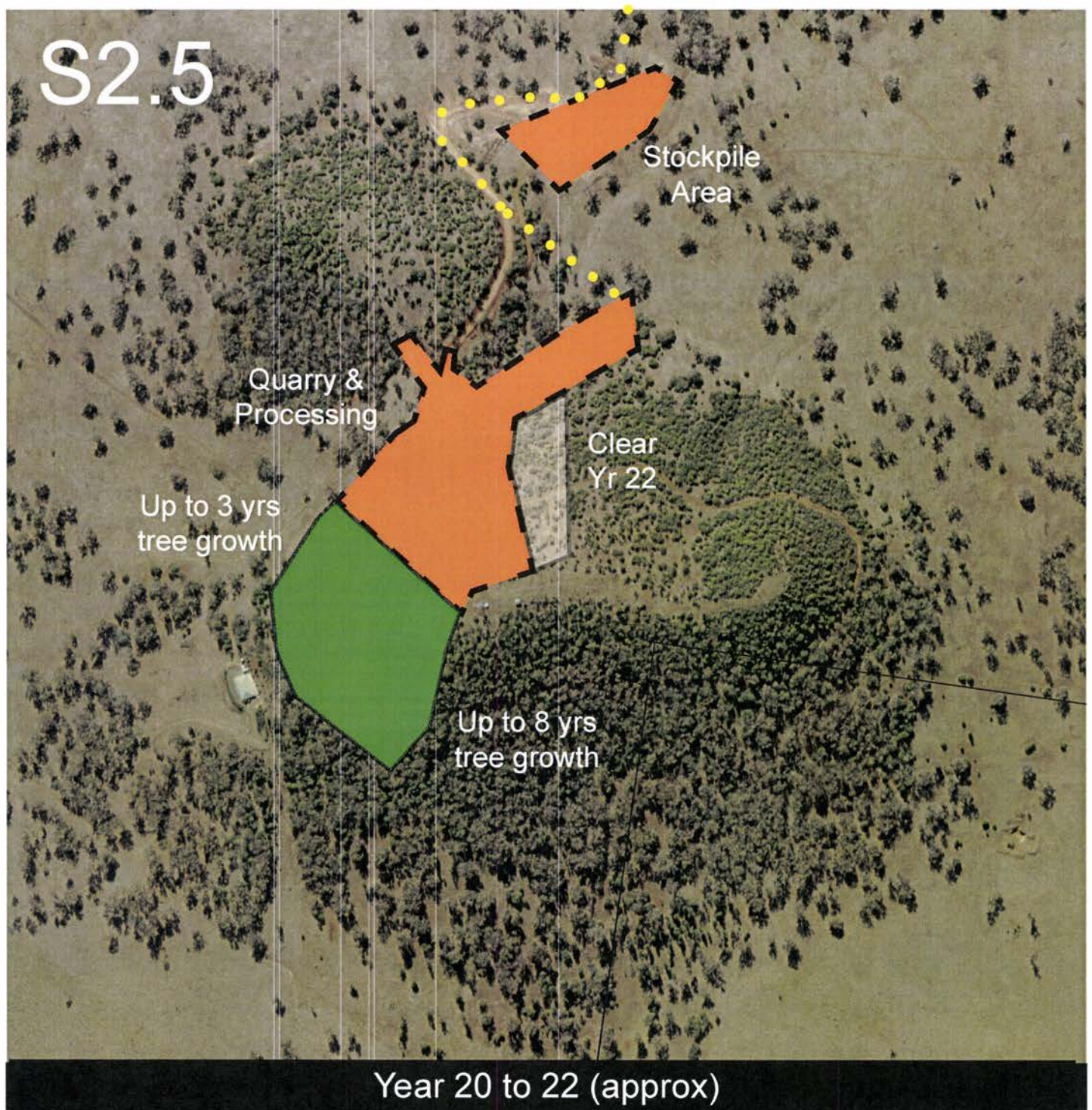


Figure 2.17: Plan of Quarry - Proposed Stage 3.1

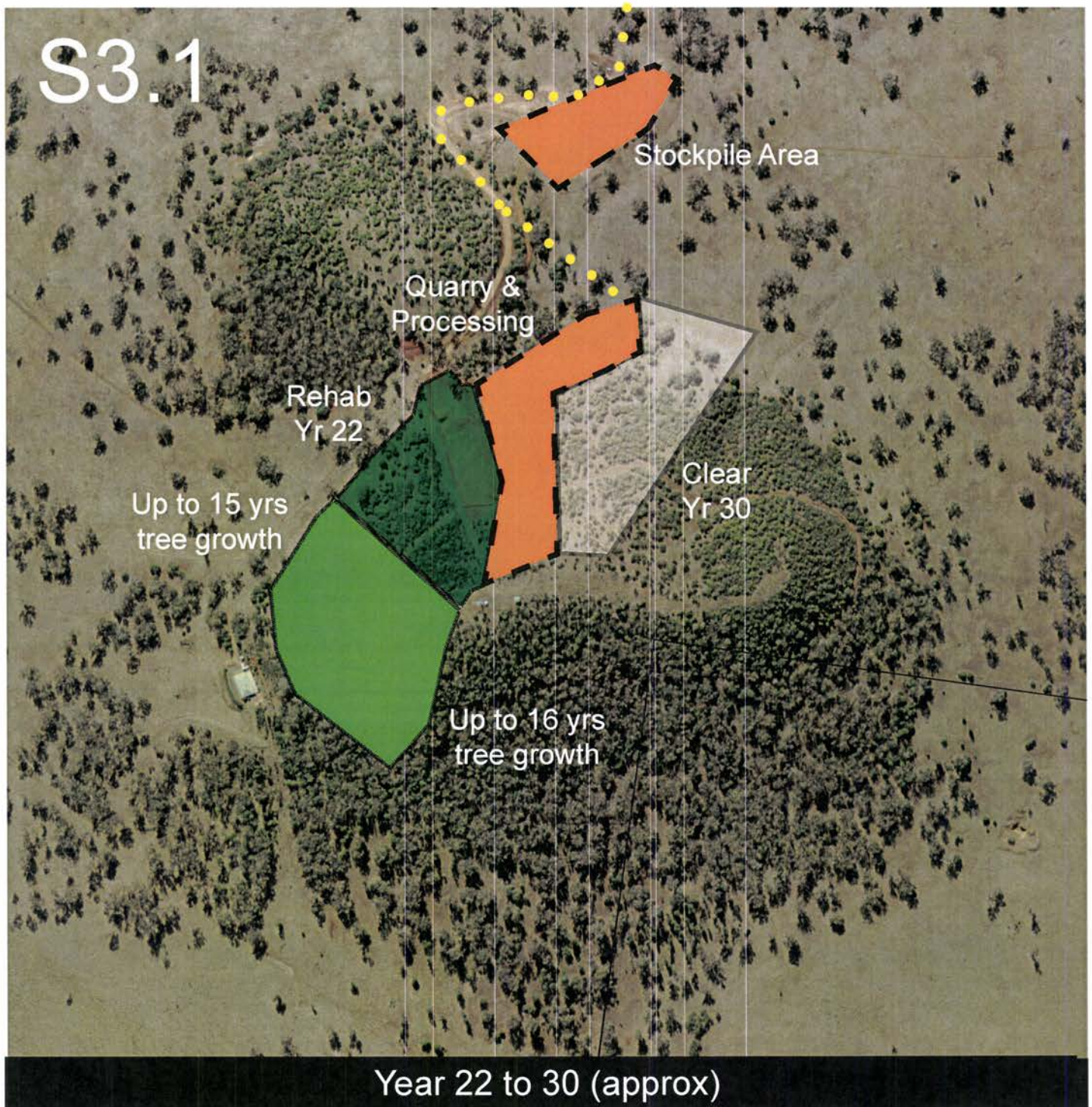
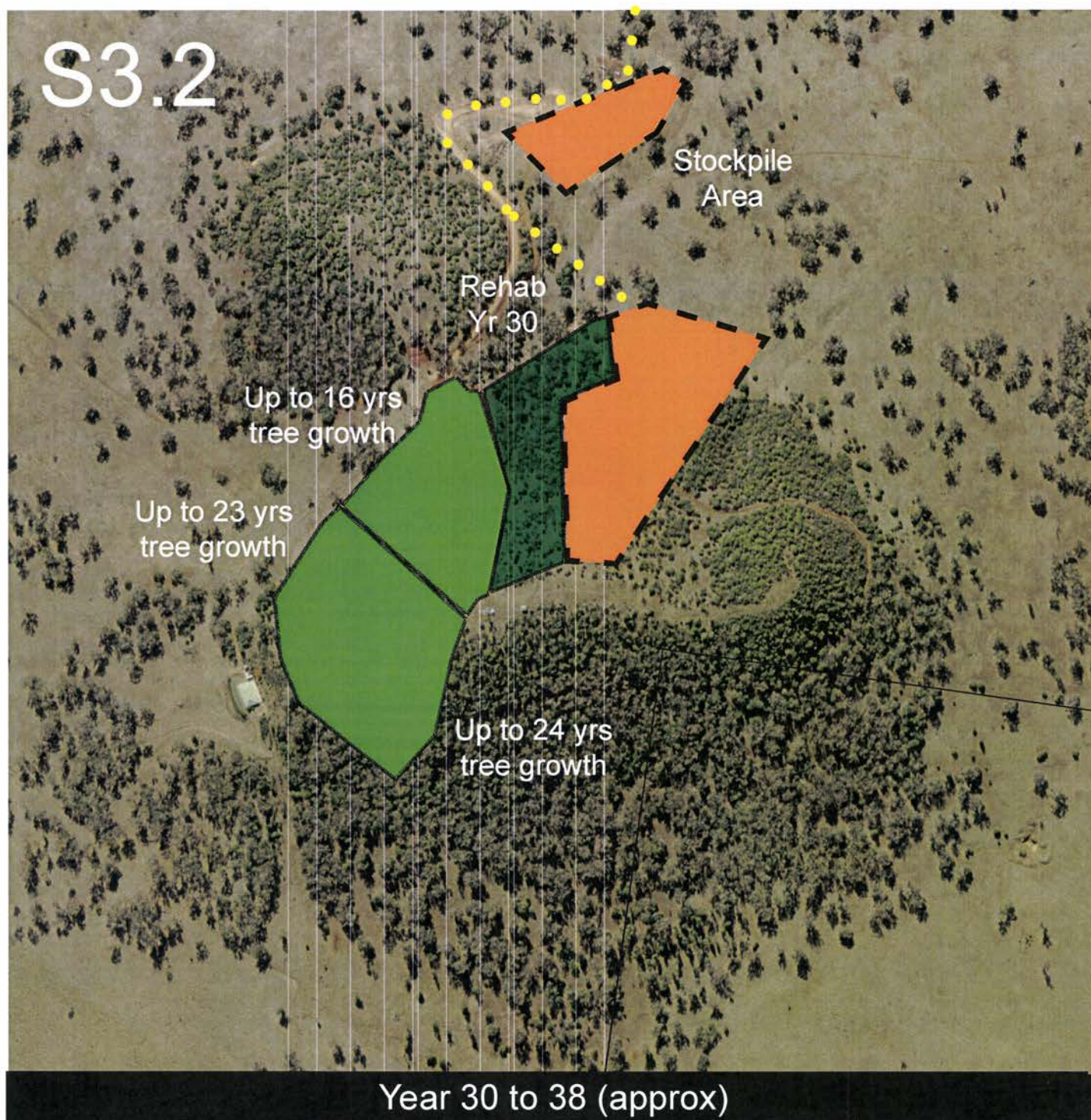


Figure 2.18: Plan of Quarry - Proposed Stage 3.2



Following completion of stage 3.2 all disturbed areas will be rehabilitated.